

DELTA DOORS™

THE LEADER IN IMPACT DOORS AND STOREFRONT SYSTEMS



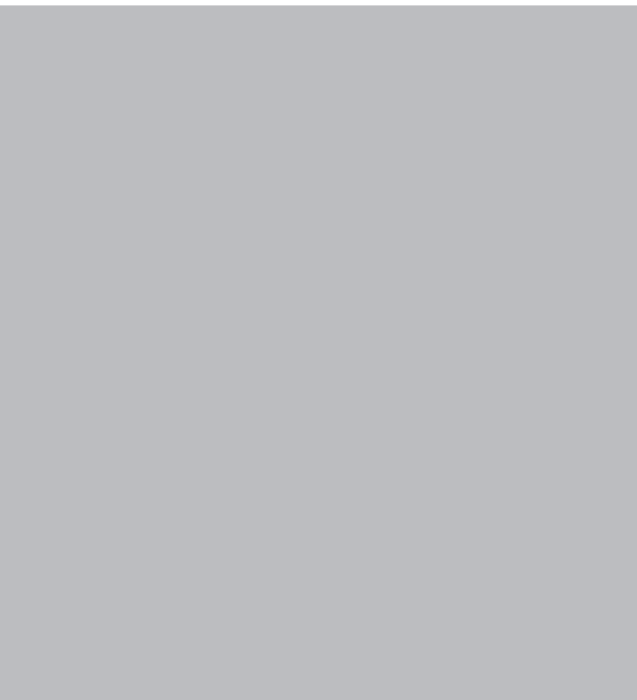
PROUD TO REPORT A NEW BUSINESS PLAN, RECAPITALIZATION, AND A STRONG OUTLOOK FOR 2011

New Capacity
Improved Turn Times
Enhanced Engineering Support



Let us be your first line of defense for **IMPACT RESISTANCE**

ENL. A DIVISION OF C.R. LAURENCE CO., INC.
deltadoors.com



What Sets Delta Doors Apart



The need for hurricane resistant exterior construction products, coupled with Delta Doors stringent compliance with local and national building codes, has resulted in high demand for our products for use in condominiums, commercial buildings, schools, universities, institutions, and some high end residential applications. Our products are approved by Miami-Dade County, and meet or exceed the requirements of the Florida Building Code for use in high-velocity hurricane zones.

We achieved these certifications by designing and manufacturing products with superior strength to weight characteristics that incorporate temporary composite advances and allows Delta Doors to supply a product with high quality. These advances include our Secure Bolt corner construction, which adds to the strength and overall performance of our entrances.

The original objective was to engineer a product that could withstand 90 psf loads, however, we surpassed that mark by approximately 44%. Every product made is inspected and engineered as meeting the same specifications required by the products tested and certified by Miami-Dade County. Our products are designed with the knowledge that our reputation is based on two things:
The quality of our product and the quality of our service.

Delta Doors Products Are Factory Glazed

Whether having glazing for impact resistant products should be done in a controlled environment, free of dust and contaminants commonly found on active projects. Every door produced by Delta Doors is glazed using square glass shops with our Wet/Dry glazing method, which includes a combination of Tremco PDM spacer and wedge gaskets, along with DOW 995 Structural Silicone for the permanent seal. Further increasing our impact resistance, Delta Doors equips each entrance with Non-Removable interior glass shops.

As the time when more stringent building codes require it, Delta Doors entrances and storefront framing systems have been engineered to accept steel reinforcement in order to meet such requirements.



DELTA DOORS

CRL. A DIVISION OF C.R. LAURENCE CO., INC.

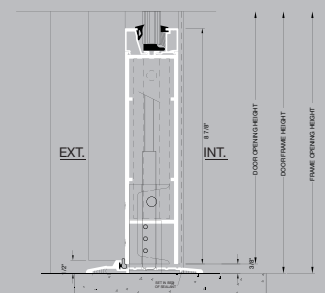
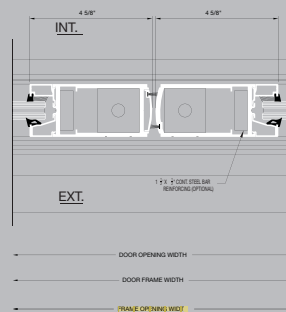
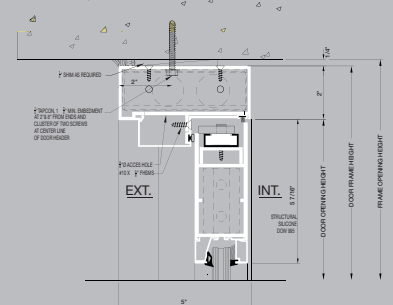
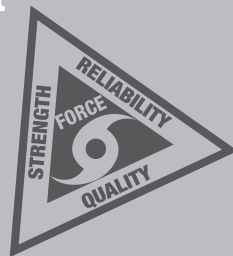
STRENGTH • RELIABILITY • QUALITY



series DH-350

+100/-100

Delta Doors was the first company in the United States to manufacture an impact resistant, Miami-Dade County, Florida-approved in-swing entrance.



deltadoors.com

DH-350 ALUMINUM OUT-SWING AND IN-SWING IMPACT DOORS

The DH-350 is a High Performance Impact Resistant Sorefron Entrance Door designed for a commercial entrance applications including retail space, hotels, condominiums, office buildings, institutional facilities and industrial structures. The DH-350 meets A.D.A. regulations and also complies with the stringent requirements of Florida's Miami-Dade County Building Codes, making it the top choice for installations in areas ravaged by hurricanes. The DH-350 is intended to be installed in punched openings or as a pre-frame with other Delta Doors Impact Framing Systems.



Figure A: Series DH-350 Impact Resistant In-Swing Stile Entrance (Front View)



Figure B: Series DH-350 Impact Resistant Out-Swing Medium Stile Entrance (Front View)

Specifications:

- Door Members are extruded from a Minimum of 6063 T6 Aluminum Alloy.
- Frame Depth 1-3/4" x 5" or 1" x 5"
(Used Without Sidelites).
- 3-3/4" Wide, 2" Deep Door Rails and Stiles.
- 4-7/8" Top Rail and 8" Bottom Rail.
- 0.125" Nominal Wall Thickness, Door and Frame.
- Maximum Frame Height 120" including Transoms.
- Maximum Panel Size: 42" x 108" Single Door, 84" x 108" Double Doors.
- Standard Finishes: White/Bronze Kynar Paint and Clear Anodized (Glass).
- Factory Pre-glazed with Structural Silicone.
- Secure Bolt Corner Construction.
- 1-1/2" Pair of 4" x 4-1/2" Heavy-Duty Stainless Steel NRP Hinges.
- Double Rows of Weather Seals.
- 3-Point Locking System.
- Non-Removable Interior Glass Stops.
- A.D.A. Compliance Threshold.

Testing and Code Compliance:

- Miami-Dade County Approved *(See Approval for Specific Order Options).*
- Florida Building Code Approved *(See Approval for Specific Order Options).*
- Maximum Design Pressures: +100 psf / -100 psf large Mass Impact.
- Tested Forced Entry Resistance to AAMA 1304.
- Test Air Infiltration to ASTM 283 at 6.24 psf.

Options:

- Custom Finishes: AAMA 2603, 2604 and 2605 Companion Painted Finishes.
- Concealed Overhead Closures.
- Exposed Heavy-Duty Closure for Coastal and High Wind Zones.
- Double or Double Railed Apped Munns.
- Large Mass 9/16" VS laminated Impact Glass *(Heat Strengthened/Heat Strengthened).*
- Glass Tint Available as Selected by the Architect/Owner.
- Concealed Panic Exit Device.

NOTE Concealed Panic Exit Devices are NOT Available for In-swing Doors.

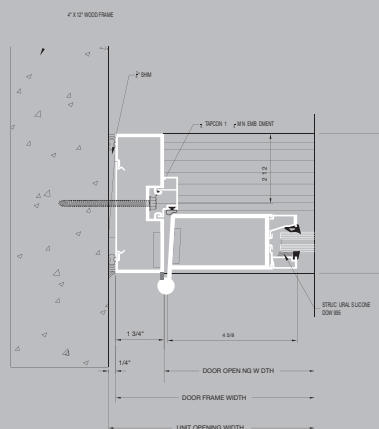
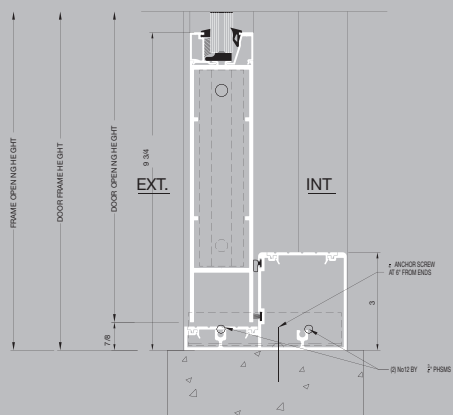


Shown Above: Florida International University Stadium, Miami, FL

STRENGTH • RELIABILITY • QUALITY



series **BAL-350** +120/-120



deltadoors.com

BAL-350 IMPACT RESISTANT BALCONY/TERRACE DOOR

The BAL-350 Impact Resistant Balcony / Terrace Door is elegantly designed for high rise applications such as hotels, condominiums, and office buildings. Being designed for both small and large mass impact resistance, as well as high performance for water resistance, makes the BAL-350 meet and exceed all commercial and high rise condominium developer requirements with the highest level of quality. With the growing need for a commercial impact resistant product in the residential market, the BAL-350 by Delta Doors has opened the doors for single terrace and balcony doors.



Figure A

Specifications:

- Door Members are extruded from a Minimum of 6063 T6 Aluminum Alloy.
- Frame Depth 1-3/4" x 5".
- 1" x 5" Jamb Provided Upon Request. *(Used Without Sidelites)*
- 3-3/4" Wide, 2" Deep Door Rails and Sashes.
- 4-1/2" Top Rail and 8" Bottom Rail.
- 0.125" Nominal Wall Thickness, Door and Frame.
- Maximum Frame Height 120" including Transom.
- Maximum Door Size: 42" x 108".
- Standard Finishes: White/Bronze Kynar Paint and Clear Anodized (Class).
- Factory Pre-glazed with Structural Silicone.
- Secure Bolt Corner Construction.
- 1-1/2" Pair of 4" x 4-1/2" Heavy-Duty Stainless Steel NRP Hinges.
- Double Rows of Weather Seals.
- 4-Point Locking System.
- Solid Brass Lever and End Seven Different Finishes: Black, White, Brushed Aluminum, Matte Aluminum, Brushed Brass, Polished Brass and Polished Chrome.
- Non-Removable Inert or Glass Sops.
- 3" High Water Threshold.

Testing and Code Compliance:

- Miami-Dade County Approved *(See Approval for Specific Order Options)*.
- Florida Building Code Approved *(See Approval for Specific Order Options)*.
- Maximum Design Pressures: +100 psf / -100 psf Large Mass Impact, +120 psf / -120 psf Small Mass Impact.
- Tested Forced Entry Resistance to AAMA 1304.
- Test Air Infiltration to ASTM 283 at 6.24 psf.
- Test Water Resistance to ASTM 547/331/18 lbs.

Options:

- Custom Finishes: AAMA 2603, 2604 and 2605 Comp an Painted Finishes.
- Concealed Overhead Closures.
- Exposed Heavy-Duty Closures.
- Double or Double Railed Applied Muntins.
- Large Mass 9/16" VS. Small Mass 9/16" Glass *(Heat Strengthened/Heat Strengthened)*.
- Small Mass 9/16" PVB Small Mass 9/16" Glass *(Heat Strengthened/Heat Strengthened)*.
- Glass Tint Available as Selected by the Architect/Owner.



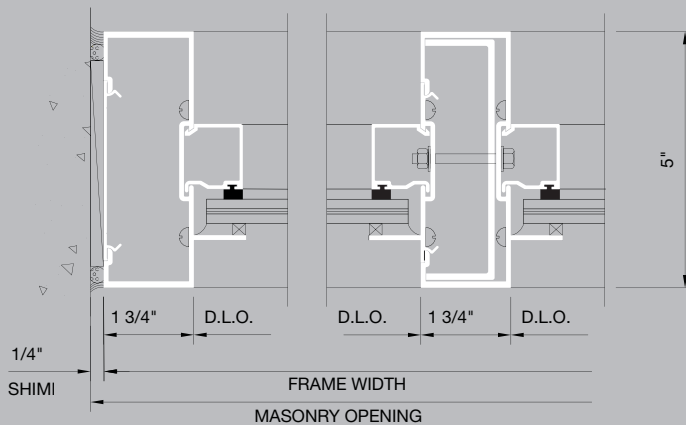
Shown Above: Grove Way Condominiums, Miami, FL

Figure A: Series BAL-350 Impact Resistant Balcony/Terrace Door (Front View).

STRENGTH • RELIABILITY • QUALITY



series **DHS-500**
+130/-130



deltadoors.com

DHS-500 IMPACT RESISTANT STOREFRONT SYSTEM *(With 9/16" Laminated Glass or 1 5/16" Insulating Glass Option)*

The DHS-500 is a 5" deep Impact Resistant Storefront Window Wall system designed for a commercial applications including retail space, hotels, condominiums, office buildings, institutional facilities and industrial structures. The DHS-500 is engineered to deliver superior quality, strength and durability, while maintaining a truly elegant appearance.



Testing and Code Compliance:

- Miami-Dade County Approved
(See Approval for Specific Order Options).
- Florida Building Code Approved
(See Approval for Specific Order Options).
- Maximum Design Pressures: +100 psf / -130 psf
Large Mass and Small Mass.
- Tested to meet or exceed requirements of AAMA 1304.
- Test Air Infiltration of ASTM 283 at 6.24 psf.

Options:

- Custom finishes: AAMA 2603, 2604 and 2605
Complete Painted finishes.
- Large Mass 9/16" SGP laminated impact Glass
(Heat Strengthened/Heat Strengthened).
- Large Mass 9/16" VS laminated impact Glass
(Heat Strengthened/Heat Strengthened).
- Small Mass 9/16" PVB laminated impact Glass
(Tempered/Tempered).

Options: *(Continued)*

- Large Mass 1-5/16" SGP laminated insulating Glass
*(Heat Strengthened/Heat Strengthened on Exterior, 1/2" Air Space,
1/4" Tempered on the Interior).*
- Glass Tint Available as Selected by the Architect/Owner.
- Double or Double Raised Applied Muntins.

Specifications:

- Frame Sections are extruded from a Minimum
of 6063 T6 Aluminum Alloy.
- Frame Depth 1-3/4" x 5".
- 0.125" Nominal Wall Thickness, Door and Frame.
- Maximum Frame Height 120" including Transoms.
- Maximum Panel Size: 48" x 120".
- Standard finishes: White/Bronze Kynar Paint
and Clear Anodized (Glass).
- Factory Pre-Glazed with Structural Silicone.

Shown Above:
Series DHS-500 Impact Resistant Storefront System (Front View).



Delta Doors Products

Delta Doors has designed and engineered its products to meet the growing need for impact resistant products within the construction industry.

Other products are also available to meet specific construction needs for interior and exterior applications.

DH-350

Impact Resistant Outer-Swing and In-Swing Medium Series Entrance

BAL-350

Impact Resistant Outer-Swing Balcony/Terrace Entrance

DHS-500

Impact Resistant Sorefront Framing System

DNS-20

Non-impact Narrow Series Entrance

DMS-35

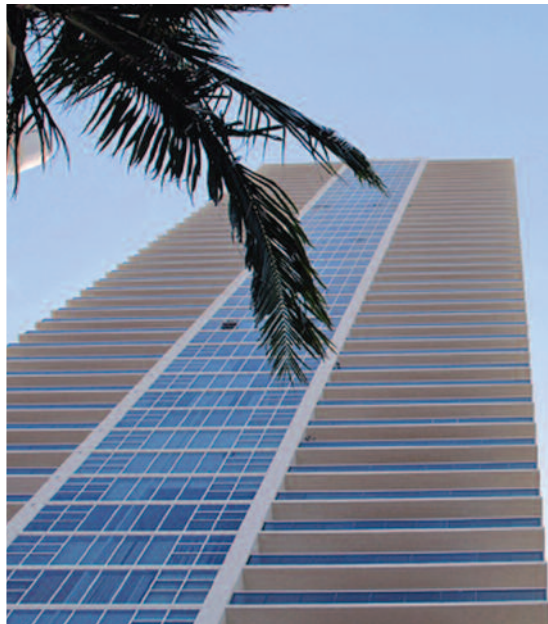
Non-impact Medium Series Entrance

DSF-450

Non-impact Sorefront Framing System

Superior quality and performance follows Delta Doors products. All Delta Doors products are conceptually engineered to deliver simplicity of installation, high visual elegance, strength, durability, and maximum performance.





DELTA DOORS

CDL A DIVISION OF C.R. LAURENCE CO., INC. 9



DELTA DOORS

ENL. A DIVISION OF C.R. LAURENCE CO., INC.

7500 NW 69th Avenue
Miami, FL 33166 2542
(305) 888 0077 phone
(305) 884 3111 fax
deltadoors@deltadoors.com

deltadoors.com

